

GREAT ADVANTAGES



MUCH FASTER INSTALLATION

This part only requires one screw on the ejection side and two screws on the injection side, which simplifies installation and makes the maintenance process faster.



INDIVIDUAL MOLDING INSERT

The molding insert is easily disassembled for the customer to machine.



APPROPRIATE FOR CLEANROOM

Thanks to the Turcite® wear plate, it eliminates the need for lubrication, making it suitable for many applications, including cleanroom molds. Turcite® also helps friction wear and tear so extends materials lifetime.



SMALL SPACE REQUIRED

Very compact product enables its use in small places.



OVERALL SAVINGS

Forget about complicated and tight slide housings, the only precision machining required is on the customizable insert area. Since there are no angle pins, lateral sliding guides or external retainers, the overall cost reduction is up to 50% less than other slides on the market.

CUMSA

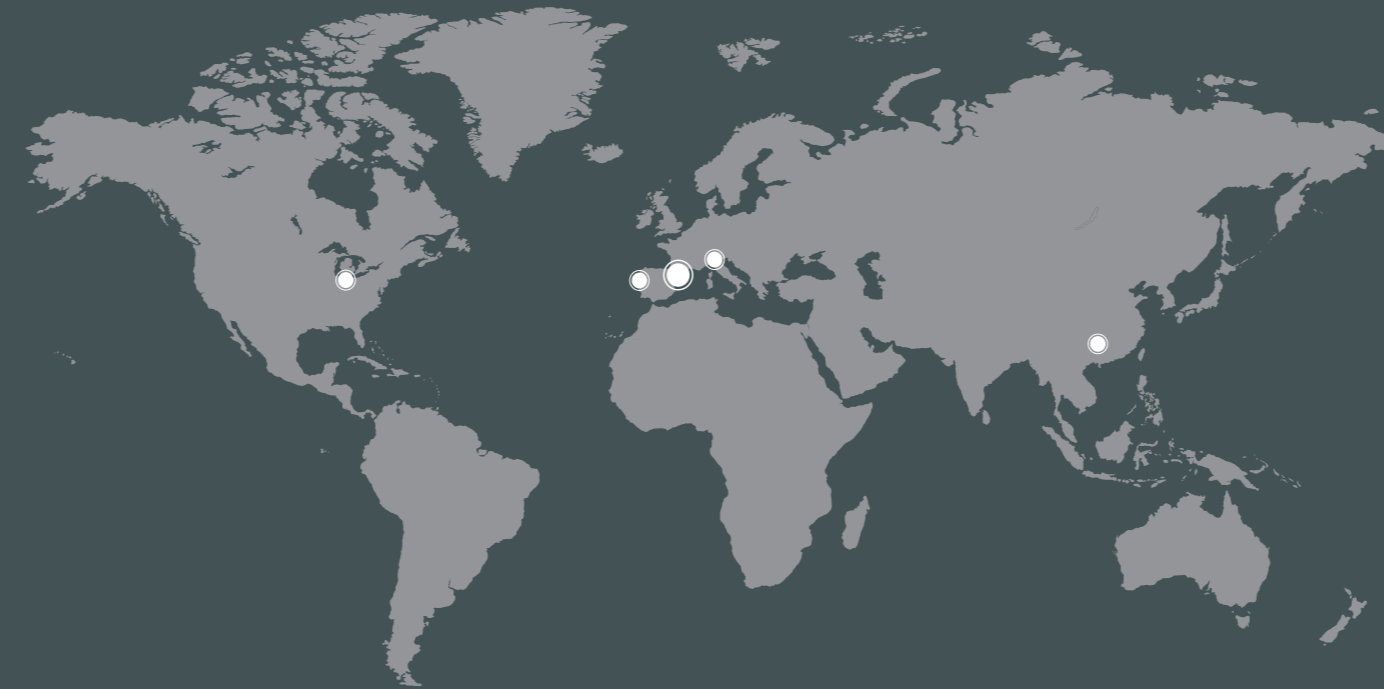
www.cumsa.com

Ed. 2023 - 03

08960 · Sant Just Desvern
Barcelona · Spain
Tel: +34 93 473 25 52
Fax: +34 93 473 49 19
e-mail: info@cumsa.com



The future
IS HERE



CUMSA
USA

CUMSA USA, LLC
950 Stephenson Hwy (Suite 106)
48083 – Troy (MI) · USA
Tel.: +1 248 850 8385
Fax: +1 248 850 8385
e-mail: info@cumsausa.com

EURO
CUMSA

EUROCUMSA, Lda.
Estrada dos Guilhermes Achadas · Cerca
PT-2405-012 · Maceira · Portugal
Tel: +351 244 770 420
Fax: +351 244 770 421
e-mail: geral@eurocumsa.pt

CUMSA
italia

CUMSA ITALIA, Srl.
Via Brughetti 9
20813 Bovisio Masciago (MB) · Italia
Tel.: +39 (0) 362 170 8735
Fax: +39 (0) 362 179 4647
e-mail: cumsaitalia@cumsa.com

CUMSA 坤盛
China

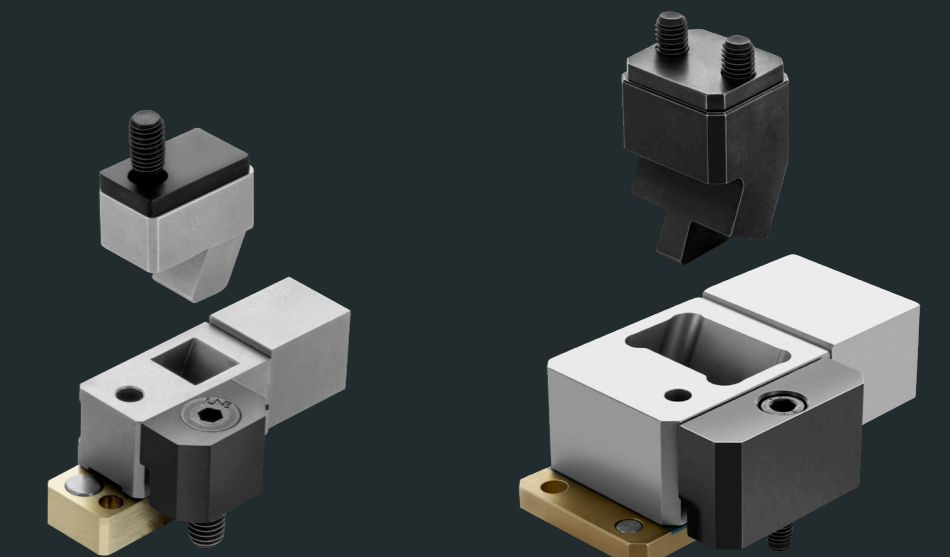
STANDARD PARTS FOR MOLDS 标准模具零配件
CUMSA Standard Parts for Moulds (Shenzhen) Co., Ltd.
103 Room, 1st Floor, Building C,
Hangcheng High-tech Industrial Park
HuaFeng Intelligent valley
CN-518126
HangKong Road, Hangcheng Str.
Baoan District, Shenzhen
Tel: +86 755 2998 5783
e-mail: cumsachina@cumsa.com

CUMSA ASIA PACIFIC Ltd.
Suite 2305A, World Wide House
Des Voeux Road Central
Hong Kong S.A.R
Tel: +86 755 2823 6174

CUMSA

INNOVATIVE SOLUTIONS
FOR YOUR MOLDS

THE SLIDES REVOLUTION



MS MINI
SLIDE

CS COMPACT
SLIDE

INTRODUCING THE NEW
FLOATING INSERT

SLIDES

EN

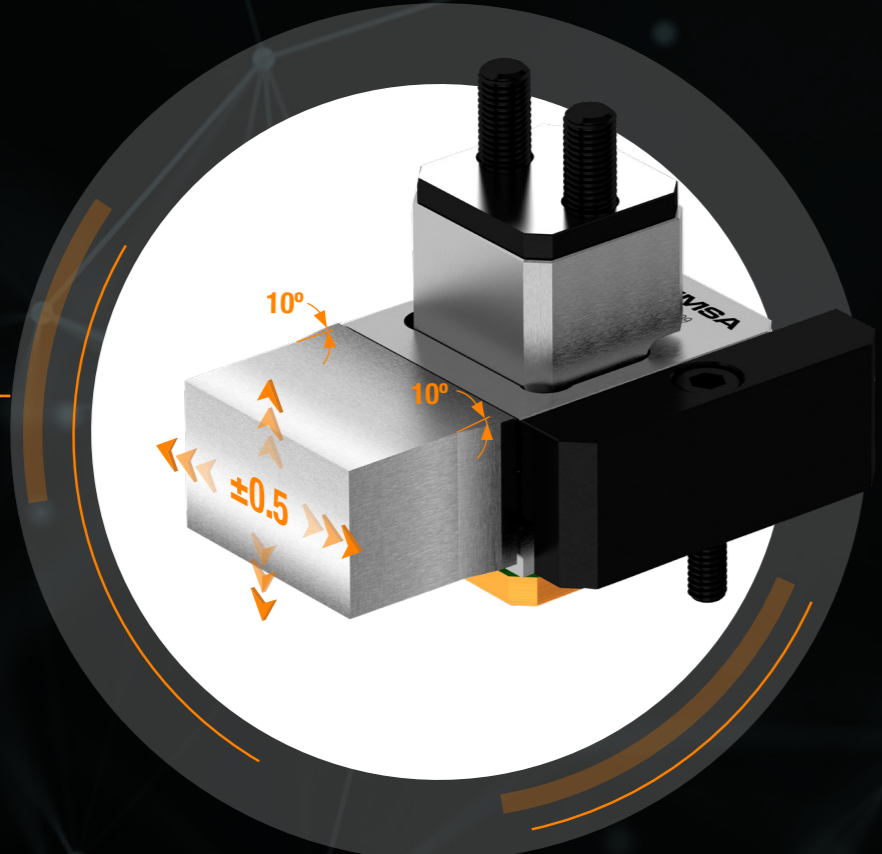
CS

MS

WELCOME TO THE NEW ERA OF SLIDES

Floating Insert

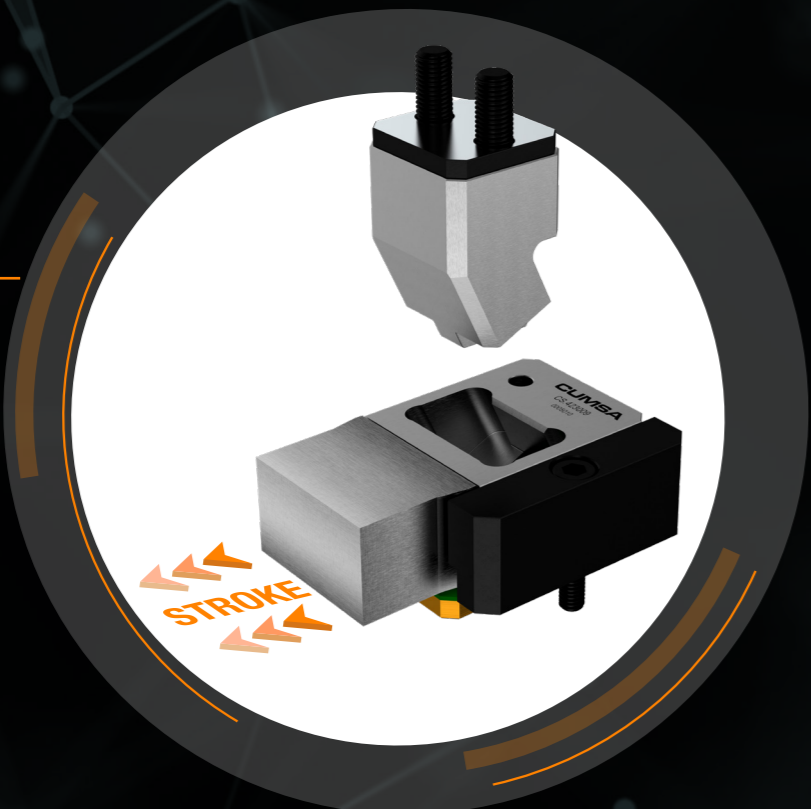
The floating insert allows for self-centering in the cavity because of the 10° cone machined by the customer and its horizontal and vertical movement when the mold closes.



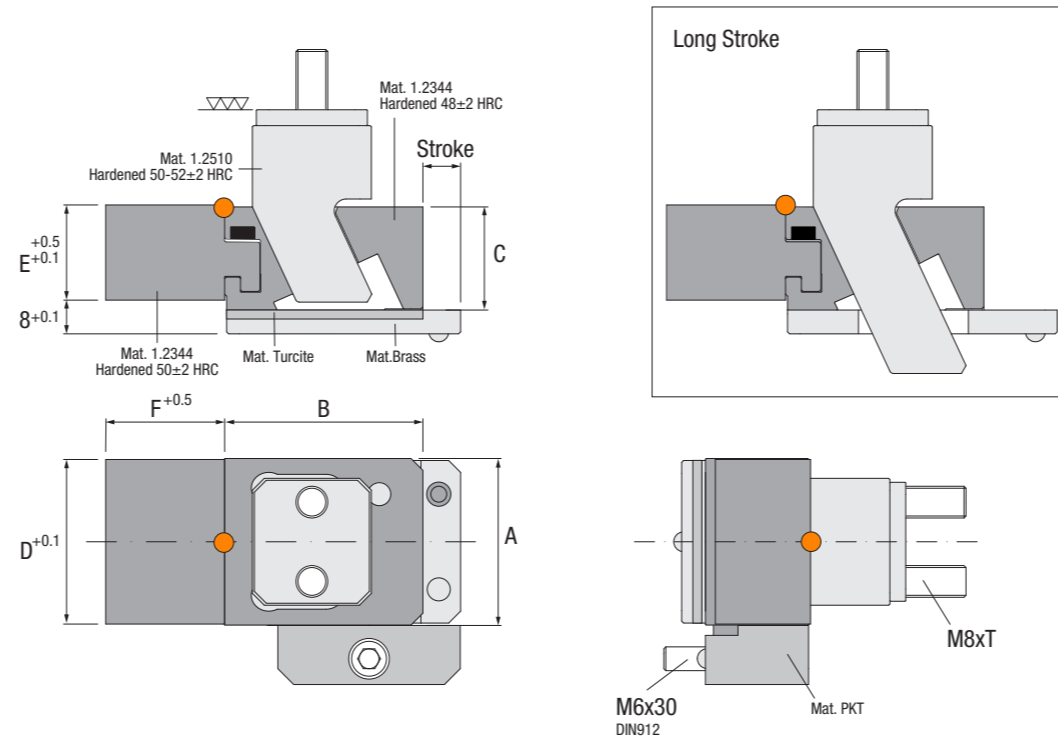
6 Insert dimensions and 9 Different strokes

The CS and the MS part numbers offer a great range of dimensions, so the slide can be used in many molds.

INSERT DIMENSIONS	STROKE
11.6x12.2	3
17.6x16.5	6
23.6x20.5	8
41.5x24	9
	17
51.5x30	11.5
	19
61.5x36	14
	22

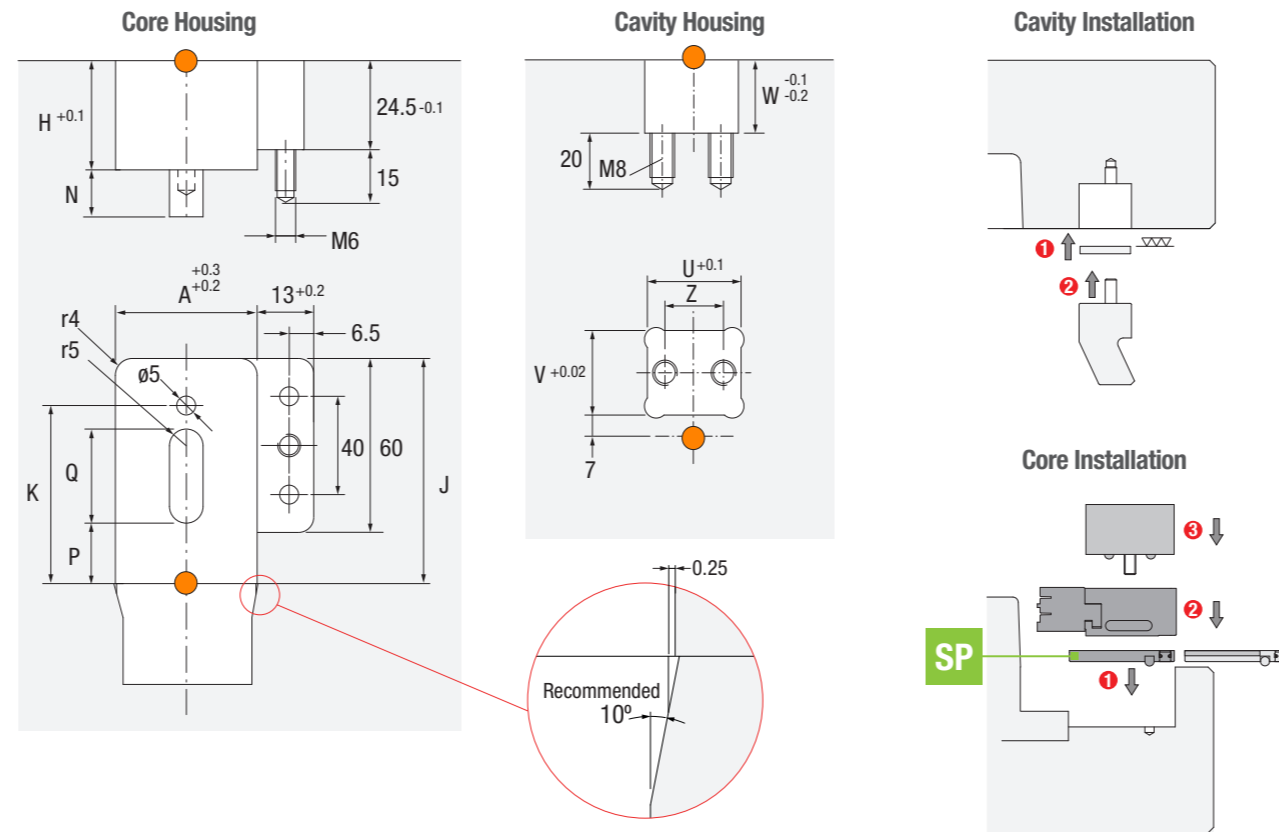


CS

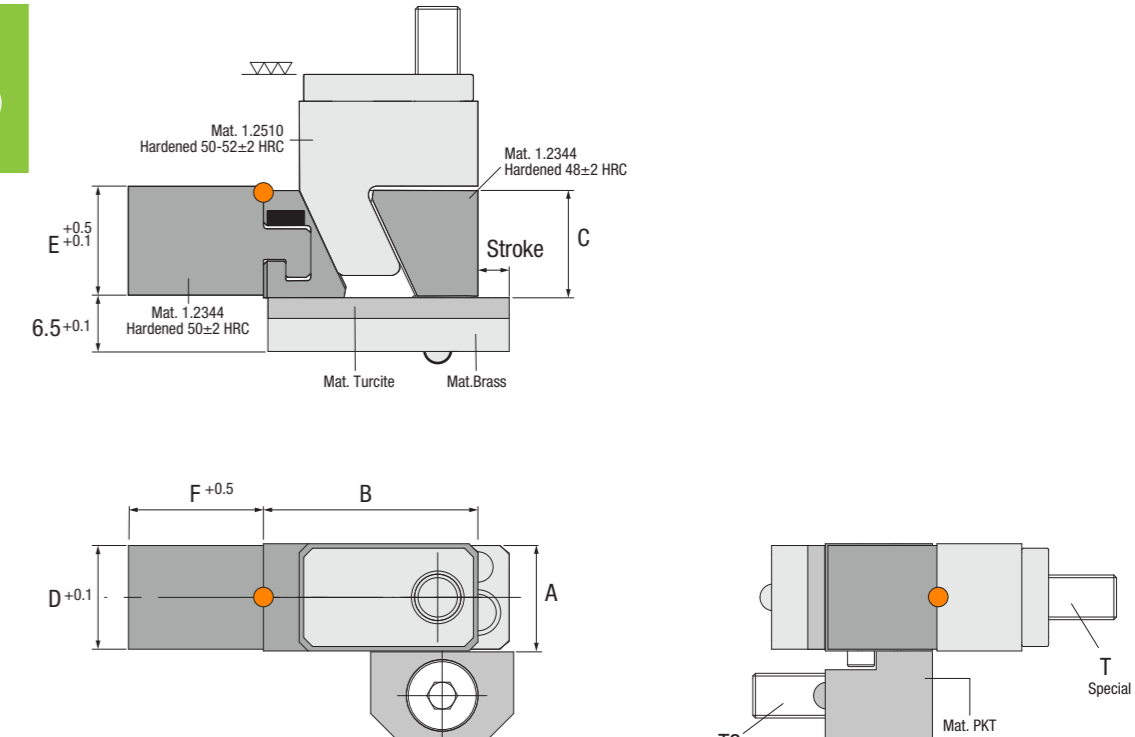


Ref.	A	B	C	D	E	F	H	J	K	P	Q	N	Stroke	T	U	V	W	Z
CS.423009	42	50	26	41.5	24	30	32.5	60	54	-	-	-	9	55	32	30	24	20
CS.423017	42	50	26	41.5	24	30	32.5	68.5	62.5	17	34	12	17	55	32	30	24	20
CS.523511	52	56	32	51.5	30	35	38.5	69	63	-	-	-	11.5	55	38	34	26	20
CS.523519	52	56	32	51.5	30	35	38.5	76	70	20	35	9	19	55	38	34	26	20
CS.624014	62	62	38	61.5	36	40	44.5	77	72	-	-	-	14	60	44	38	28	24
CS.624022	62	62	38	61.5	36	40	44.5	85	81	23	39	11	22	60	44	38	28	24

Installation Guidelines

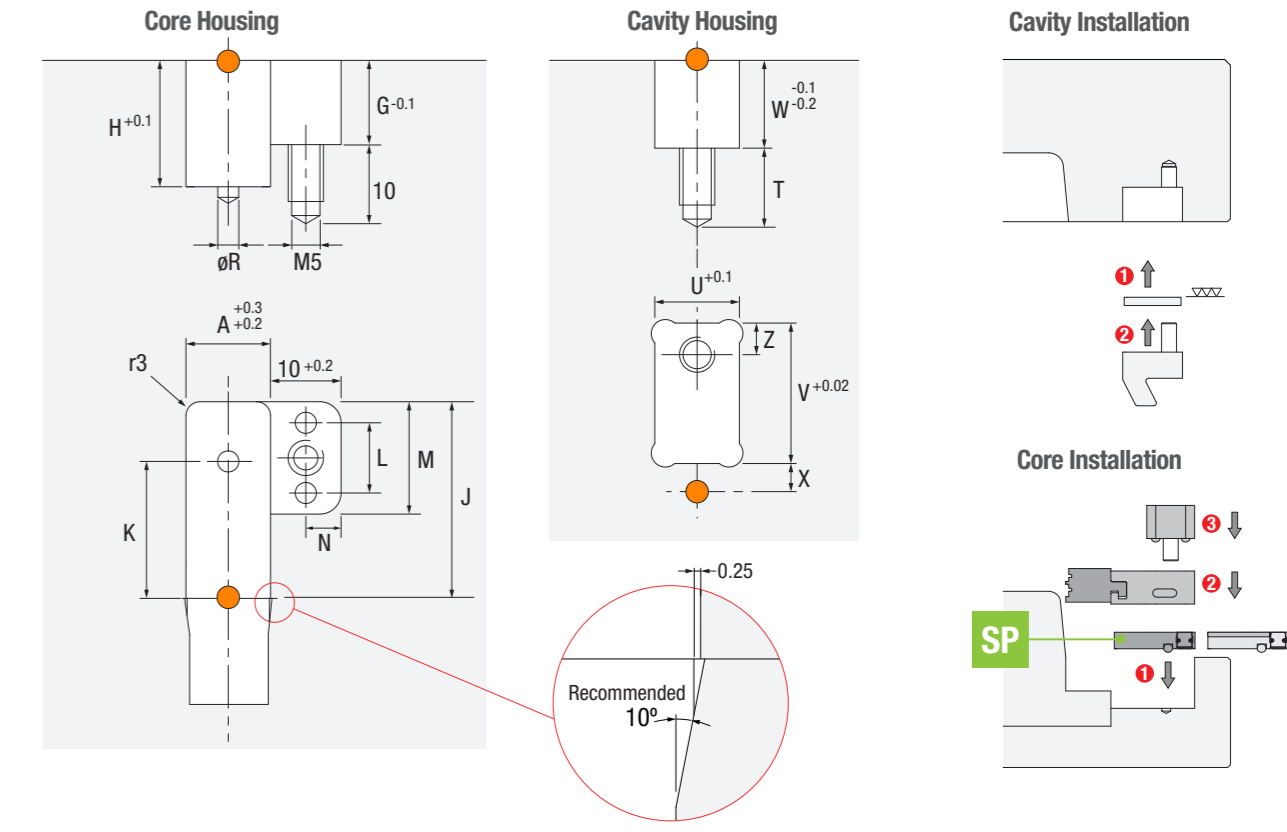


MS



Ref.	A	B	C	D	E	F	G	H	J	K	L	M	N	R	Stroke	T	T2	U	V	W	X	Z
MS.121503	12	24	12	11.6	12.2	15	12.5	18.5	28	19.5	10	16	5	3	3	M5x20	M5x20	12	20	12.5	4	4.5
MS.182006	18	41	16	17.6	16.5	20	16.5	22.5	47	32.5	16	28	4.5	5	6	M6x40	M5x25	12	26	15.5	7	13
MS.242608	24	45	20	23.6	20.5	26	16.5	26.5	53	38.5	16	28	4.5	5	8	M6x45	M5x25	17	30	16.5	7	15

Installation Guidelines



Ref.	SP.423009	SP.423017	SP.523511	SP.523519	SP.624014	SP.624022
Compatible with	CS.423009	CS.423017	CS.523511	CS.523519	CS.624014	CS.624022



SP SLIDE ADJUSTMENT PLATE

Ref.	SP.121503	SP.182006	SP.242608
Compatible with	MS.121503	MS.182006	MS.242608