

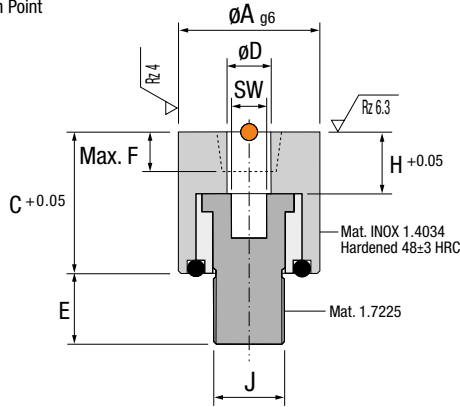
SPRUE ADJUSTER

ES Desvío Colada DE Angussweiche
IT Deviazione Colata PT Desvio Jito FR Régleurs de Carotte

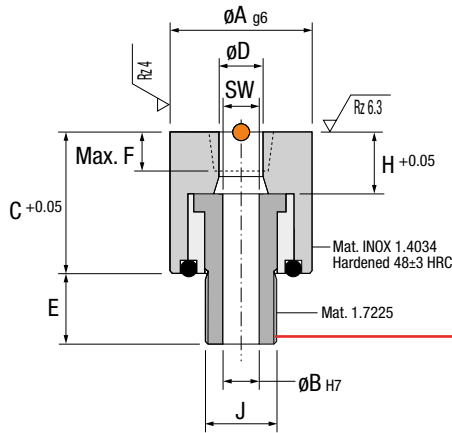


SA

● Cad Insertion Point



Ref.	A	C	D	E	F	H	J	SW
SA.120014	12	14	4.1	6	3	7	M6	3
SA.160016	16	16	5.1	8	5	8.5	M8	4
SA.200018	20	18	6.1	10	6	11	M10	5
SA.240022	24	22	9.5	12	10	14.5	M14	8



Ref.	A	B	C	D	E	F	H	J	SW
SA.120314	12	3	14	4.1	6	3	7	M6	3
SA.160416	16	4	16	5.1	8	5	8.5	M8	4
SA.200518	20	5	18	6.1	10	6	11	M10	5
SA.240822	24	8	22	9.5	12	10	14.5	M14	8

IMPORTANT !
With ejector bore.
Con alojamiento para expulsor.
Mit Auswerferbohrung.
Con alloggiamento per espulsore.
Com alojamento para extractor.
Avec placement pour l'éjecteur.

ACCESSORIES



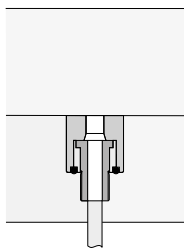
Patented



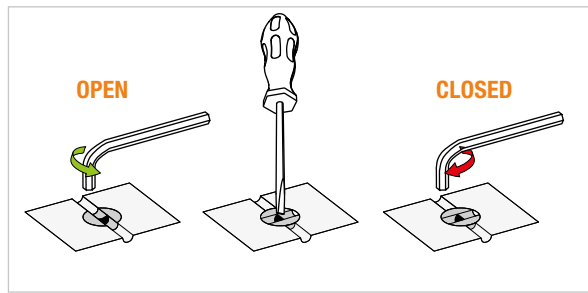
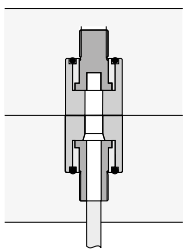
Installation Guidelines

Consejos de Instalación · Richtlinien zur Installation · Consigli di Installazione · Instruções de Instalação · Mode d'Installation

Trapezoidal runner



Full round runner



Possible configurations

Posibles Aplicaciones · Einsatzmöglichkeiten · Possibili Applicazioni · Possíveis Aplicações · Possibilités d'Application

1

Open / Abierto
Auf / Aperto
Aberto / Ouvert

Left cavity / Cavidad izquierda
Linkes Nest / Cavita' sinistra
Cavidade esquerda / Gauche

Right cavity / Cavidad derecha
Rechtes Nest / Cavita' destra
Cavidade direita / Droite

Closed / Cerrado
Zu / Chiuso
Fechado / Fermé

2

Left cavity / Cavidad izquierda
Linkes Nest / Cavita' sinistra
Cavidade esquerda / Gauche

Right cavity / Cavidad derecha
Rechtes Nest / Cavita' destra
Cavidade direita / Droite

3

Open / Abierto
Auf / Aperto
Aberto / Ouvert

Closed / Cerrado
Zu / Chiuso
Fechado / Fermé